



Buckingham Road, Epping, CM16

BUTLER & STAG



Guide Price £400,000 - £425,000.
This exquisite top floor two bedroom, two bathroom apartment, occupying a wonderful position in the popular 'Arboretum' development and located within a short walk of Epping town centre, Epping Forest and the tube station.



Leasehold

- Two Double Bedrooms/Two Bathrooms
- Spacious Lounge/Diner
- Separate Kitchen
- Allocated Covered Parking
- 119 Year Remaining Lease
- 0.6 Miles To Epping Station

Accommodation is vast with the floor space stretching over 730 sq ft making it one of the largest of the two bedroom apartments within the development.

From the wide and welcoming entrance hall you will initially find access to a double door storage cupboard, with the hallway then taking you onto a large living/ dining room which also has the benefit of french doors opening to a private balcony with enough space for a table and chairs to enjoy those summer evenings. Located off the hallway is then a separate fully fitted kitchen finished to very exacting standards with integrated appliances running throughout. There are two well proportioned bedrooms with the master having the luxury of its own en-suite bathroom along with fitted wardrobes and then there is a family bathroom.

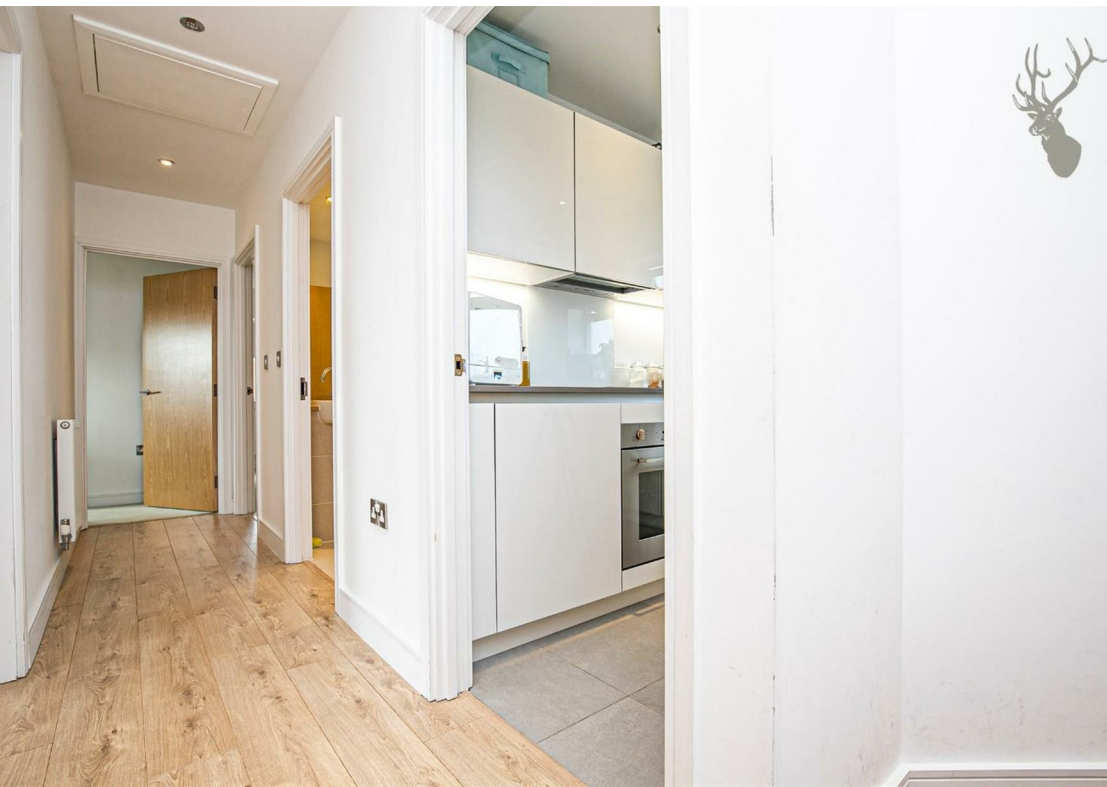
Externally, the property has a charming and secluded communal rear garden, allocated covered parking along with a large private storage cupboard perfect for cyclists.

Buckingham Road is in a prime location within the historic market town of Epping. Its ideally located for local amenities including the High Street with a comprehensive selection of shops, pubs and restaurants. Transport links into London are excellent and there are several well regarded state and private schools within easy reach, some with transport pick up points locally.

3D Virtual Tour - This property has a fully immersive walk through.

Butler & Stag is delighted to offer Virtual Viewings to all of our residential clients. This innovative 3D property technology allows prospective buyers or tenants to immerse themselves with a virtual walk through of each of our properties 24 hours a day, 7 days a week, whilst in the comfort of their home, work or wherever they may

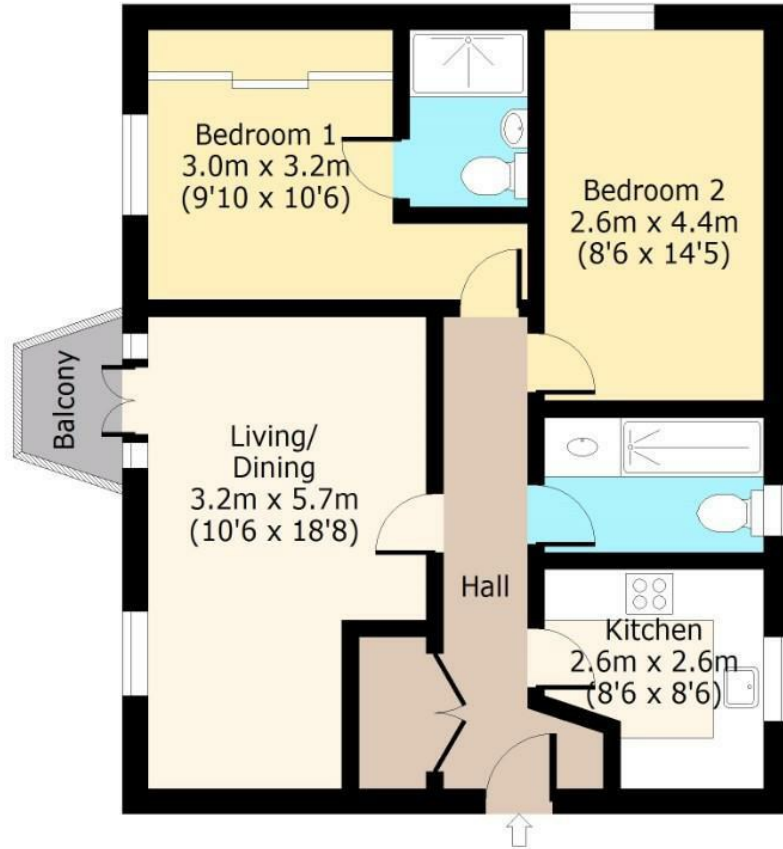




Buckingham Road

Second Floor

Approx. 66 Sq. meters (710 Sq. feet)



Total area: approx. (Including Balcony) 68 Sq. meters (732 Sq. feet)
Total area: approx. (Excluding Balcony) 66 Sq. meters (710 Sq. feet)
For illustration purposes only - not to scale

www.lpaplus.com

IMPORTANT NOTICE - These particulars have been prepared in good faith and they are not intended to constitute part of an offer or contract. We have not performed a structural survey on this property and the services, appliances and specific fittings have not been tested. All photographs, measurements, floor plans and distances referred to are given as a guide and should not be relied upon.

BUTLER & STAG

☎ 01992 667666

🏠 4 Forest Drive, Theydon Bois, Essex, CM16 7EY

✉ theydon@butlerandstag.com

www.butlerandstag.uk